

ENGlobal Inc.
Sole source solutions partner



S88 Batch Automation Solutions

ENGlobal Automation offers sole sourced solutions to improve your chemical plants production so that every batch operates at your current golden batch level. Our batch control experts are well versed on a wide variety of chemical processes and have more than 30 years of proven track record in delivering automation solutions using all the major automation platforms.

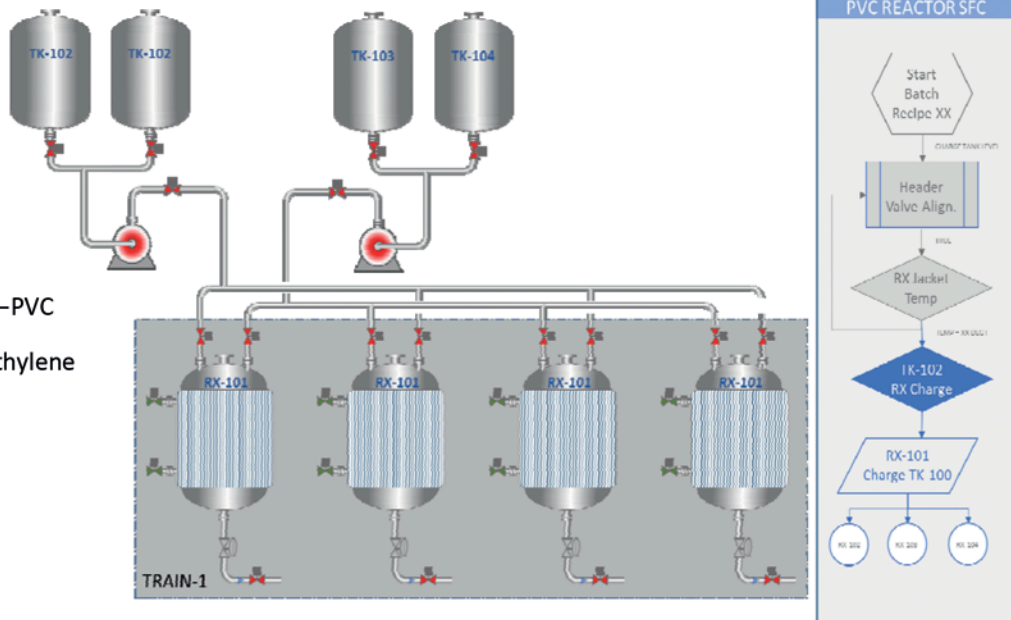
ENGlobal Automation sole sourced solutions takes the stress out of your project, our local engineering, design, fabrication, and in plant support offers a single point of responsibility for your entire project lifecycle.

Our batch control experts can optimize your current process, expand, and replace your existing control systems so that you can realize the benefits of a ISA 88.1 batch model to maximize your process flexibility, quality, and safety.

ENGlobal sole sourced solutions are the key to your next successful project.

PROCESS EXPERTISE

Residence Time Reactors—PVC
Linear Low Density Poly-Ethylene
Cyclodextrine
Pulp & Paper Digestors
Ethylene-amines
Low Density Polyethylene



ENGlobal Inc.

654 N. Sam Houston Parkway E.
Suite 400.
Houston, TX 77060-5914

Phone: 281-878-1000
Fax: 281-878-1010
Email: sales@englobal.com

ZERO 
IMPACT
HEALTH • SAFETY • ENVIRONMENTAL
AN ENGLOBAL CORE VALUE